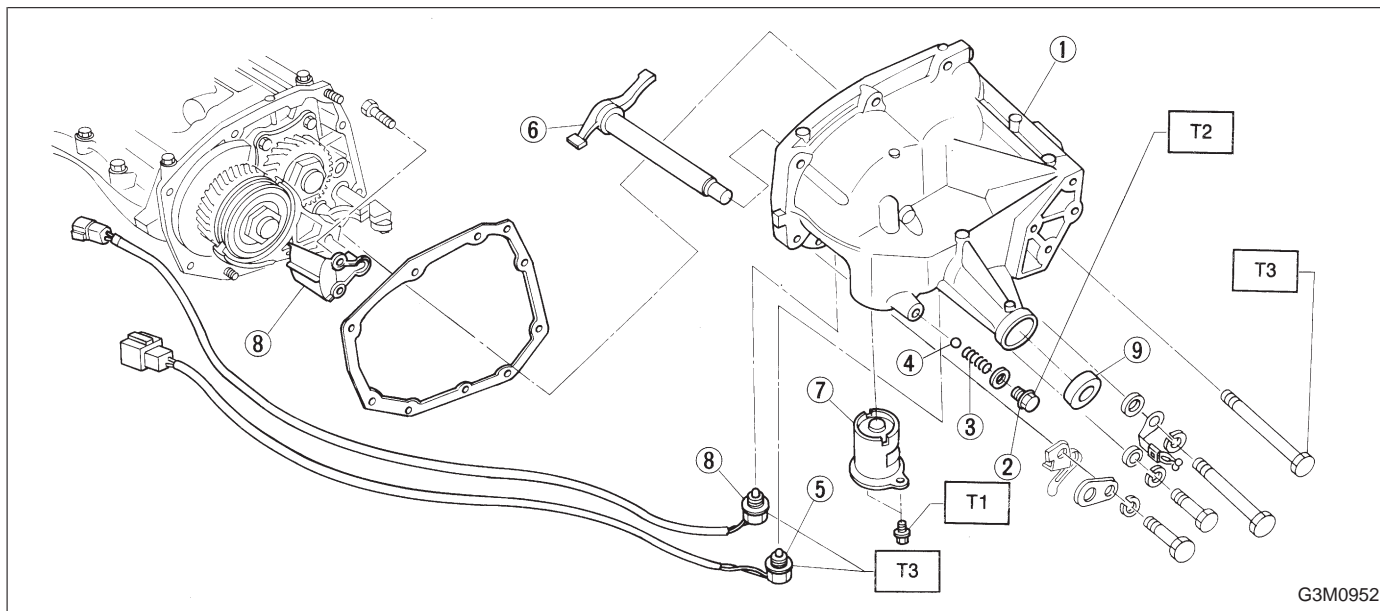
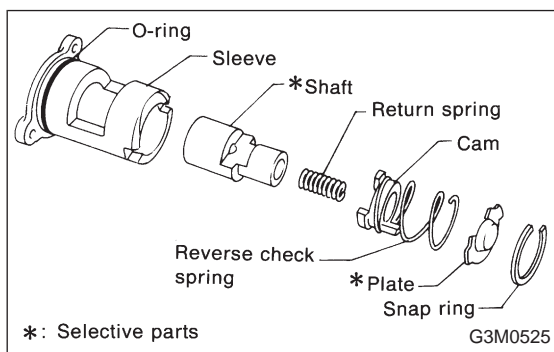


### 3. Rear Case (FWD Model)

#### A: DISASSEMBLY



- 1) Remove rear case ①.
- 2) Remove plug ②, spring ③ and reverse check ball ④.
- 3) Remove neutral switch ⑤.
- 4) Pull out shifter arm ⑥.



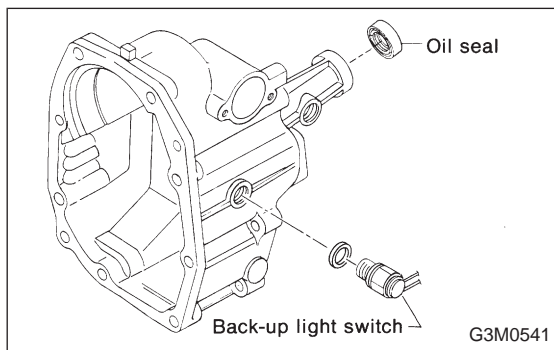
- 5) Remove reverse checking sleeve ⑦.
- Procedure for disassembly is as follows:
- Reverse check sleeve assembly uses an O-ring which should not be scratched.
  - Be careful not to break adjustment shim placed between reverse check sleeve assembly and case.

- (1) Using a standard screwdriver, remove snap ring (Inner-28).

**NOTE:**

Replace snap ring with a new one if deformed or weakened.

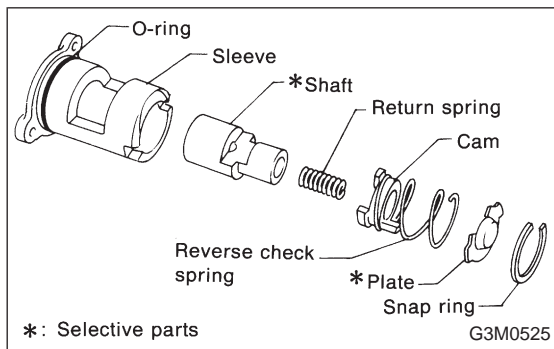
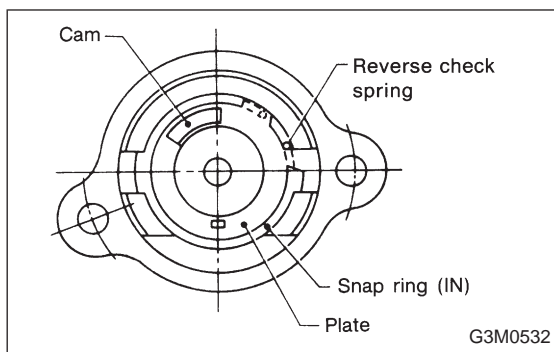
- (2) Remove reverse checking plate.
- (3) Remove reverse checking spring with cam.
- (4) Remove reverse return spring.
- (5) Remove reverse accent shaft.
- (6) Remove O-ring.



- 6) Remove back-up light switch.
- 7) Removal of oil seal.

**CAUTION:**

**Do not reuse oil seal.**



## B: ASSEMBLY

Assembly of rear case is in the reverse order of disassembly. Observe the following:

### 1) Assembly of reverse checking sleeve.

- (1) Install reverse accent shaft, checking cam, return spring and checking spring onto reverse checking sleeve.

#### NOTE:

Be sure the bent section of reverse checking spring is positioned in the groove in checking cam.

- (2) Hook the bent section of reverse checking spring over reverse check plate.
- (3) Rotate cam so that the protrusion of reverse checking cam is at the opening in plate.
- (4) With cam held in that position, install plate onto reverse checking sleeve and hold with snap ring (Inner-28).
- (5) Position O-ring (35.4 x 1.5) in groove in sleeve.

#### NOTE:

- Make sure the cutout section of reverse accent shaft is aligned with the opening in reverse checking sleeve.

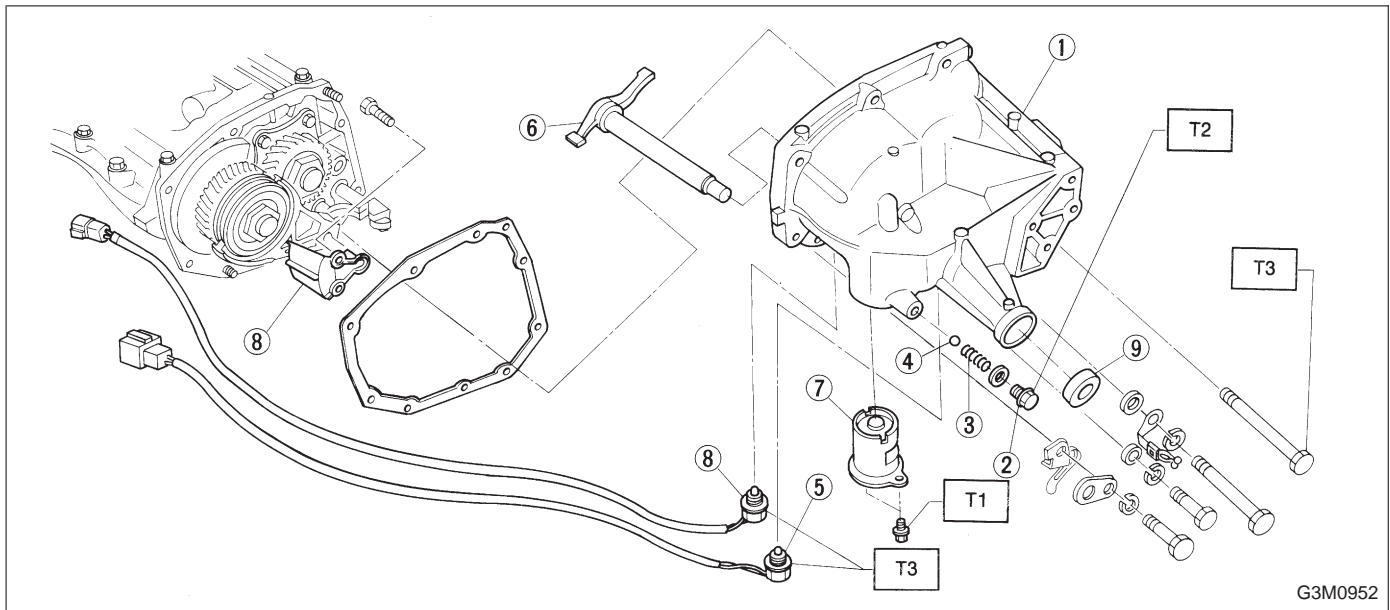
- Spin cam by hand for smooth rotation.

If it does not return properly, replace reverse checking spring.

- Move cam and shaft all the way toward plate and release.

If cam does not return properly, replace reverse checking spring; if shaft does not, check for scratches on the inner surface of sleeve. If sleeve is in good order, replace spring.

- Select a suitable reverse accent shaft and reverse check plate by referring to "Neutral Position Adjustment."



**Tightening torque: N·m (kg·m, ft·lb)**

T1:  $6.4 \pm 0.5$  ( $0.65 \pm 0.05$ ,  $4.7 \pm 0.4$ )

T2:  $10 \pm 1$  ( $1.0 \pm 0.1$ ,  $7.2 \pm 0.7$ )

T3:  $25 \pm 5$  ( $2.5 \pm 0.5$ ,  $18.1 \pm 3.6$ )

2) Installation of shifter arm (6)

Install shifter arm into the partition from the front while inserting selector arm into the opening in reverse check sleeve. Pass shaft through hole in selector arm until its end comes out of the rear of transfer case.

**CAUTION:**

**Apply a coat of gear oil to shifter arm. Also make sure oil seal is positioned properly.**

3) Adjustment of neutral position

**NOTE:**

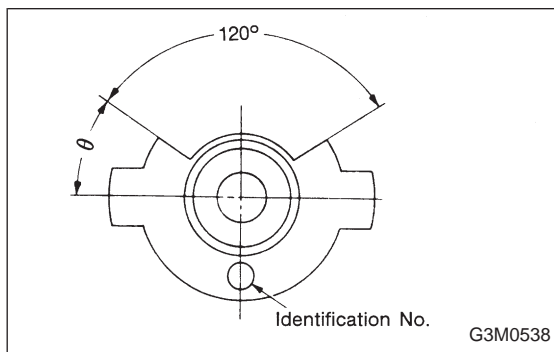
After assembling and installing rear case, adjust neutral position.

- (1) Shift gear into 3rd gear position.
- (2) Shifter arm turns lightly toward the 1st/2nd gear side but heavily toward the reverse gear side because of the function of the return spring, until arm contacts the stopper.
- (3) Make adjustment so that the heavy stroke (reverse side) is a little more than the light stroke (1st/2nd side).
- (4) To adjust, remove bolts holding reverse check sleeve assembly to the case, move sleeve assembly outward, and place adjustment shim (0 to 1 ea.) between sleeve assembly and case to adjust the clearance.

## NOTE:

- When shim is removed, the neutral position will move closer to reverse; when shim is added, the neutral position will move closer to 1st gear.
- If shims alone cannot adjust the clearance, replace reverse accent shaft and re-adjust.

● Reverse accent shaft	Part No.	Mark	Remarks
	32188AA020	A	Neutral position is closer to 1st gear.
	32188AA002	No mark or B	Standard
	32188AA030	C	Neutral position is closer to reverse gear.



## 4) Reverse checking plate adjustment

## NOTE:

After assembling and installing rear case, adjust reverse checking plate.

Shift shifter arm to "5th" and then to reverse to see if reverse checking mechanism operates properly. Also check to see if arm returns to Neutral when released from the reverse position. If arm does not return properly, replace reverse checking plate.

● Reverse checking plate	Part No.	No.	Angle $\theta$	Remarks
	32189AA000	0	28°	Arm stops closer to 5th gear.
	32189AA010	1	31°	Arm stops closer to 5th gear.
	32189AA020	2	34°	Arm stops in the center.
	32189AA030	3	37°	Arm stops closer to reverse gear.
	32189AA040	4	40°	Arm stops closer to reverse gear.